

BHS NEWSLETTER

B L O O M I N G T O N H I S T O R I C A L S O C I E T Y

New Board Members take office

VISIT US!

- Wednesday
1-5 pm
- Thursday
1-8 pm
- Saturday
1-5 pm



INSIDE THIS ISSUE:

New officers	1
Dan Patch RR	2
Legacy Grant	3
Membership	3

Each January the Bloomington Historical Society begins a new year of service. Our twelve board members serve two-year terms, with half of the board up for renewal each year. In November, members at the annual meeting re-elected four returning board members, and two new board members, Lisa Stanford and Mark Campbell, to fill open positions.

Mark Campbell comes to the board with experiences in genealogy and historical societies. He is involved with the Masonic Lodge and served on the board at MN Masonic Homes for over 25 years. He has lived in Bloomington for 62 years. His expertise and knowledge will aid the board members in their work.

Lisa Stanford was on the board previously, and returns for a 2-year term. She has experience with bookkeeping and accounting. She will step into the role of BHS treasurer, taking over for Patti Nesheim. Lisa is a descendant of long-time Bloomington residents, and brings that knowledge to the museum.

Re-elected board members are Jean Bellefeuille (curator), Jerry Heisler, Jim Goodermont and Rose Underhill (President). Board members with one year remaining

in their terms are Barb Bellorin, Denise Logeland, Ryan Young, Fran Stachour and Karl Feind.

Since our last meeting, Ross Johnson has stepped down from his role on the board, which means we have an opening on the board for a one-year term. **If you are interested in serving on the board for a year, please contact Rose Underhill at (Bloomitarian@gmail.com).**

Our sincere thanks to Patti Nesheim, Ken Veness and Ross Johnson for their years of service on our Board of Directors.

Upcoming Events

Sunday March 9, 2025, 2PM: Places of Worship

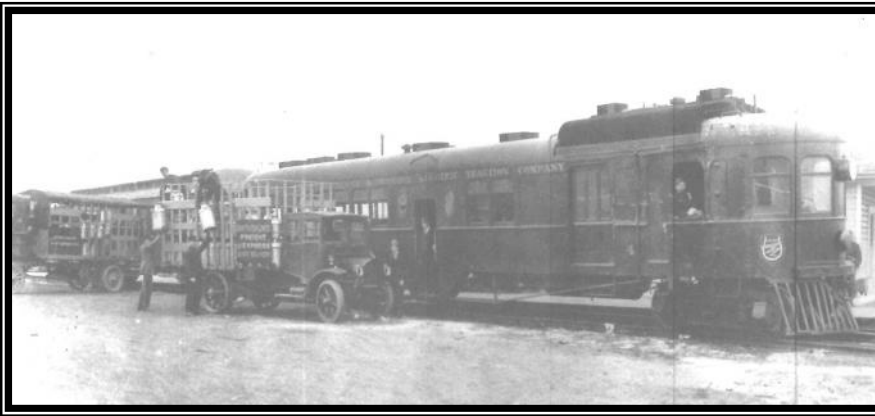
Over the past 175 years, churches in Bloomington have been a vital part of the Bloomington community. Learn about some of these places, and how Bloomington congregations grew as our city grew.

Sat. April 26, at 2, 3 & 4PM Bloomington History 101

See us at **Bloomington's Indoor Farmer's Markets.**
Feb. 8th and March 8th.

The Dan Patch Line

In the early 1900's, Colonel Marion W. Savage established a railway: the Minneapolis, St. Paul, Rochester and Dubuque Electric Traction Company. He nicknamed it the Dan Patch Line after his famous racehorse. It was a gas-powered electric train. The trains had their own generators that powered the drive wheels. The passenger trolley looked like a streetcar without overhead wires.



Opening on July 4, 1910, the railway began where the streetcar lines ended at 54th and Nicollet in Minneapolis and went south. Many stations along the route were named after the farmers whose land it passed through. The line ran through Bloomington & Savage to Antlers Park in Lakeville. Stops in Bloomington included Oxboro Heath at 95th & Lyndale, Bloomington at 102nd & Penn, Bradbury at 104th & France, Bluff Park (Masonic Home) and Auto Club on Auto Club Road. Savage owned a summer home and farm buildings near the station at Normandale & 109th. Within a year the route was extended into Northfield.

Marion Savage owned Antlers Park, an amusement park on Lake Marion that he built for his rail passengers to enjoy. Many people rode the rails to Antlers Park where they could have a picnic, swim, boat, fish and have fun during the day. In the evening, many danced and listened to music at the pavilion at the park. Electricity for the park was provided by a small rail engine, the Augerita. A small depot is

still standing on the west side of the tracks along Highway 65, a few miles south of Burnsville Center. The name plate on the sign says Orchard Gardens. Years ago, Lyndale Avenue was Highway 65. It crossed the river and turned west, running

parallel to what is now Interstate 35.

Work trains hauled materials, supplies and consumer goods. Farmers brought milk cans to the stations where they were loaded onto the trains and hauled into the city. Boxes of bread were shipped daily, and the empty boxes returned the same way. In the early 1900s, students from Bloomington attended Minneapolis high schools, and rode the trains into the city. They boarded in private homes during the week and came home on weekends.

In 1915, a second line was added to the Dan Patch RR. It went from Minnea-

polis west into areas including St. Louis Park and west Bloomington, meeting up with the first line at Auto Club Station. Several stops in Bloomington included Kelley at the Ski Chalet, Hyland Lake on the southeast side, and Bush Lake.

Several years after Savage's death in 1916, the rail company sold to the Minneapolis, Northfield, Southern Railroad. In 1942, the passenger service was stopped. Come see more about Savage, Dan Patch the horse, and Dan Patch Railroad at the museum now.

(Compiled by Rose Underhill. Thanks to Rose Ann Hanft, Ken Veness, Jerry Heisler, Karl Feind, Minneapolis and the Age of Railways, St. Louis Park Historical Society, Bloomington Historical Society, and MN DOT Minnesota Statewide Historic Railroads Study Project Report.)



GRANT AWARDED

We are delighted to announce that we have received a small grant from the State of Minnesota Arts and Heritage Fund through the Minnesota Historical Society to purchase new inventory management software. No more handwritten records!

As part of the software package, we are able to be a participating museum with the Minnesota Alliance of Local History Museums. Selected items from our collection can be seen online at www.MNCollections.org. Scroll down just a short way and click on Bloomington Historical Society.

You will be able to see artifacts from our collection. Click on the photo of an item, and get even more information about it. What a wonderful way to bring Bloomington History to you! New items are being uploaded weekly. Our goal is 1,000 items in 2025.

2025 MEMBERSHIP DONATION

Members fund our programs. Join today!
See our website for online giving options.

NAME _____

PHONE _____

ADDRESS _____

CITY _____

STATE/ZIP CODE _____

EMAIL _____

MEMBERSHIP CATEGORIES

_____ Individual	\$ 30.00
_____ Family	\$ 50.00
_____ Contributing	\$ 100.00
_____ Supporting	\$ 250.00
_____ Patron	\$ 500.00
_____ Corporate	\$ 600.00
_____ Benefactor	\$1,000.00

Additional donation: \$ _____

Please make checks payable to:
Bloomington Historical Society

Mail to: Bloomington Historical Society
1800 West Old Shakopee Road
Bloomington, MN 55431

_____ YES, I'd love to volunteer at the Old
Town Hall Museum. I'm available: (circle)

Tuesday afternoon Wednesday afternoon

Thursday afternoon Thursday evening

Saturday afternoon Other: _____

BLOOMINGTON HISTORICAL SOCIETY

Founded in 1964, the Bloomington Historical Society is dedicated to the discovery, preservation and dissemination of knowledge about the City of Bloomington.

Our mission is to collect, preserve and hold in the public trust the many artifacts, photographic images, memorabilia and life stories of the people who have lived in Bloomington.

The organization is run entirely by volunteers and we depend entirely upon your donations for our operations, programs and displays. We are grateful for your on-going support.

Old Town Hall Museum

Penn Avenue at Old Shakopee Road

Open Wednesdays and Saturdays 1 to 5 pm

Thursdays 1 to 8 pm

Additional open hours by appointment



Bloomington Historical Society
1800 West Old Shakopee Road
Bloomington, Minnesota 55431